

# D-Link<sup>®</sup>

## **DSC-100**

Digital Camera / Webcam / Digital Video

User's Manual

# Contents

Introduction.....	1
Package Contents .....	1
Introduction to USB .....	2
Introduction to Video Editing .....	3
Hardware Installation.....	4
Placement .....	4
Front View .....	4
Rear View.....	5
Top View .....	5
Status LCD Indicators.....	6
Using the DSC-100 .....	7
Setting Camera Shooting Modes .....	7
Changing Resolutions .....	8
Taking Pictures.....	9
Deleting Pictures.....	10
Transferring Images To Your Computer .....	11
Using The DSC-100 Program To Save Your Images.....	11
Using a TWAIN Compliant Imaging Application To Download Images from the DSC-100 .....	15
FAQ (Frequently Asked Questions).....	16
Technical Specifications .....	17
D-Link Offices .....	18
Limited Warranty .....	19
Registration Card .....	25

# **Introduction**

Congratulations on your purchase of the D-Link DSC-100. The DSC-100 enables you to take digital photos, record digital video and videoconference. This guide will explain the features and functions of the DSC-100.

## **Package Contents**

- DSC-100 Digital Camera
- Driver CD
- Digital Imaging Software on CD
- 3 AAA Alkaline Batteries
- Wrist Strap
- Stand
- USB cable
- User's manual
- Quick Install Guide

# Introduction to USB

USB stands for Universal Serial Bus. It is a standard for connecting external devices to your computer quickly and easily. One of the nice things about USB is that power can be provided to the USB device through the USB cable. Some devices such as printer need more power than the USB ports can provide, so those devices will have to use an external power source. USB also allows the device to be connected and removed from the PC without the need to shut down the computer.

Currently many USB products are widely available on the market and more are being developed for future release. Because of the high speed of the USB interface, a USB hub can be used to connect more than one USB device to one USB port at one time. The USB standard specifies that up to 127 devices can be connected to your computer.

USB is fast enough for webcams and other video devices to transfer large amounts of data. The USB specification allows for two different speeds. A lower speed of 1.5Mbps (Megabits per second) is used in low-power and low-speed devices. The faster speed of 12Mbps is used for most devices, especially USB audio and video devices.

The current standard for USB is version 1.1. A new version called USB version 2.0 will be much faster at 400Mbps and will replace version 1.1 as the standard for the market in the near future. This device will still be compatible with the new USB 2.0 standard when it becomes available.

# Introduction to Video Editing

As with video capture, the hardware that was previously needed to edit video was very expensive. Today's PC market has lowered the cost of very powerful computers that are very capable of editing and producing home videos. Of course, the faster and more robust your computer is, the faster and easier it is to edit video.

The first thing to understand when delving into video editing is that video takes up a lot of hard drive space. If you have a small hard drive, you may need to delete every project after you finish it in order to free up space for your next project. Most new computers should have enough space to edit and save many projects without any problem. Also, the bigger your project, the more space is needed.

The video editing application is the key to editing video. Many applications on the market are very simple and easy to use. Others are geared toward the more advanced users and provide many advanced features. One thing to remember when purchasing video editing software is that the cheaper the price, the less features it will include and the easier it should be to use. The more expensive software will include more features and will be much harder to learn and operate. This product may include video editing software. If you decide to purchase additional software, choose the software that will give you the features you need but won't sacrifice ease of use.

Video editing software enables you to cut and paste pieces or whole parts of a video file into a timeline. The timeline shows the logical flow of your video. Most video editing software allows you to add text and transitions to your video. When finished, you can save the video to a file or output the video to an external video device like a TV, VCR or camcorder.

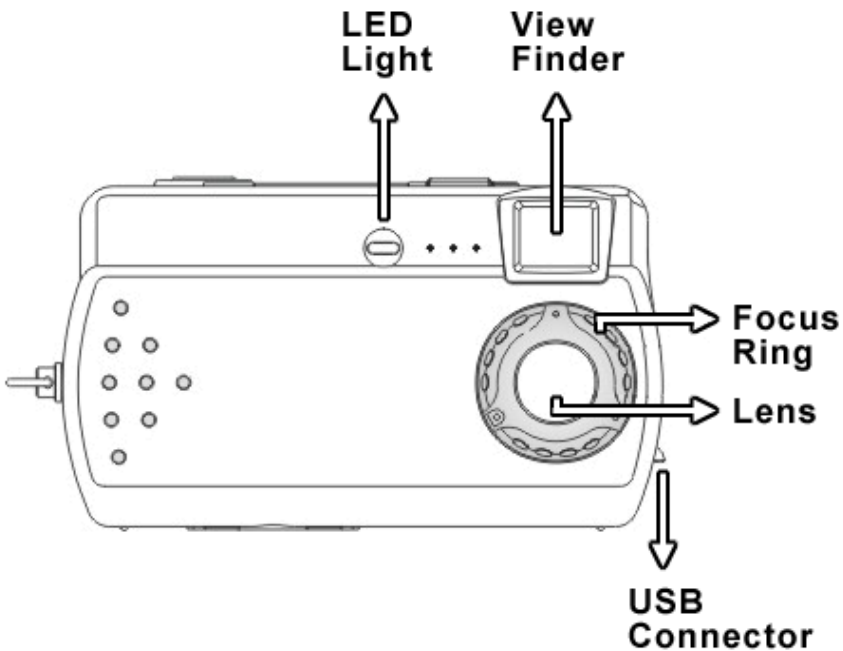
## Hardware Installation

**Important:** Before connecting the DSC-100 to the USB port of your computer, install the Drivers by following the Quick Install Guide for the operating system you are using.

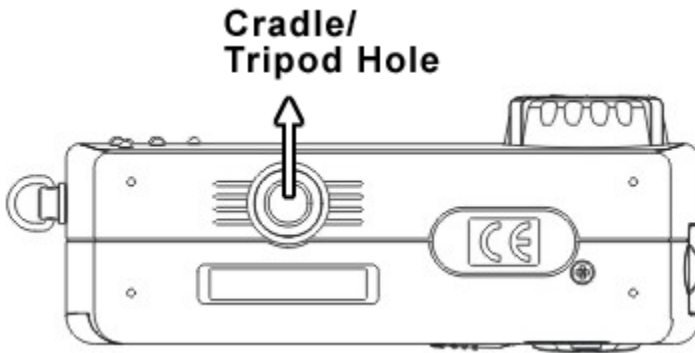
## Placement

Your DSC-100 should be placed in a safe and secure location. To ensure proper operation, please keep the unit away from water and other damaging elements. Your DSC-100 can be held in place by using the stand provided when used as a webcam.

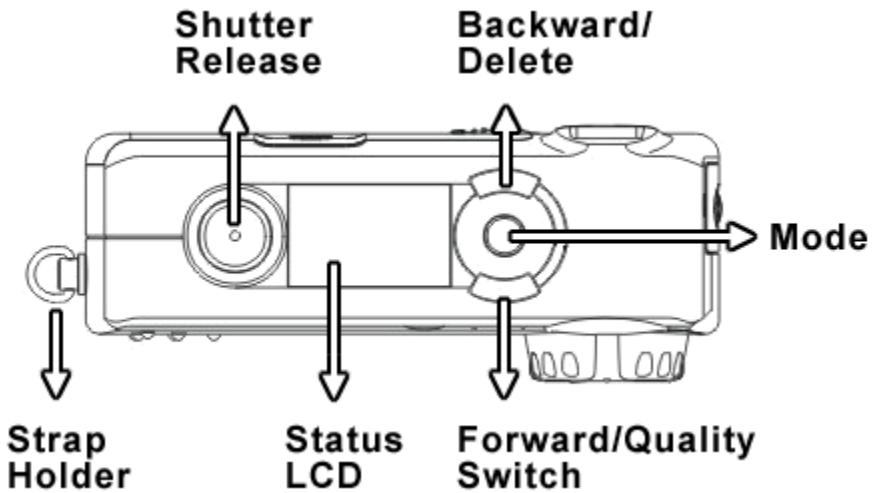
## Front View



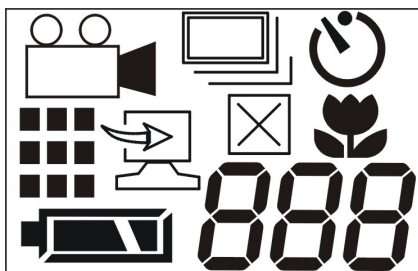
## Rear View



## Top View



## Status LCD Indicators



Refer to the table below for the meaning of each icon.

1. Self timer		8. Low Battery	
2. Video Recording		9. Continuous Shot Mode	
3. High Quality 352x288 Resolution		10. Delete Single Picture	
4. Low Quality 352x288 Resolution		11. PC Connection	
5. Image Quantity (High Quality )		12. Memory Full	
6. Image Quantity (Low Quality)		13. Macro Mode	
7. Full Battery			



## Using the DSC-100

### Setting Camera Shooting Modes

Press and hold the **Power** button for 3 seconds to power on the camera. Then press the **Mode** button to set the shooting modes. The mode will change each time you press the **Mode** button.

#### Single Snap Shot Mode (Default Setting)

Only one picture will be taken every time you press the **Shutter Release** button.

#### Single Snap Shot with Self Timer Mode



The camera will take pictures 10 seconds after you press the **Shutter Release** button. The LED light on the front panel will start to blink when you press the shutter button and stop blinking after 10 seconds.

#### Continuous Snap Shot with Self Timer Mode



You can set the camera to take 1 to 10 continuous pictures with a 10 second interval using the self-timer mode. Press the **Mode** button until you see the **Timer Mode** icon appear. Press the **Mode** button for 3 seconds and press the **Forward** "**▲/⊞**" or **Backward** "**▼/⊞**" buttons to set the number of pictures to take. Click the **Shutter Release** button to apply the setting changes. Press the **Shutter Release** button again to start taking pictures. If you want to stop taking pictures, press the **Power** button.

**Tip:** Use a tripod or other steady support to hold the camera when using the self timer or continuous snapshot modes.


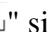
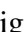


## Video Recording Mode



Press and hold the **Shutter Release** button. The camera will record continuous video until you release the button. When recording, the LED light on the front panel will stay on continuously.



## Continuous snap shot mode





The continuous snap shot mode allows you to set a time between continuous snap shots. The camera will continue to take pictures until either the memory is full, or you cancel the operation. Press and hold the **Mode** button for 3 seconds. The "" sign will start blinking. Press the **Forward** "/ or **Backward** "/ buttons to set the time interval between snapshots. The timed interval can be set from 1 to 60 minutes. Press **Shutter Release** button to apply setting changes. Then press the **Shutter Release** button again to start the continuous mode snap shots. Press the **Power** button to stop shooting.

## Changing Resolutions

The DSC-100 takes all images at 352x288 resolution. Changing the image quality will change the compression rate to make smaller image files. Taking pictures at the Low setting will allow you to hold more photos on the camera. Once the camera is full, you will need to download your photos to your computer and erase the photos on the camera.

Press the **Forward** "/ button to change to the next image quality.

High image quality = 

Low image quality = 

## Taking Pictures

Make sure the camera power is on. Set the mode to your desired preference. Locate the subject you want to shoot by looking through the viewfinder.

**Note:** If you don't use the camera for 30 seconds, the DSC-100 will automatically power off.

**Note:** The focus range for PC Camera/Webcam mode is 30cm (Macro) to 1.5 Meters.

### If you are using the DSC-100 for...

#### Digital Still Photos

- Press the **Power** button for 3 seconds to power on the camera. (The LED light on the rear panel will turn green)
- Using Viewfinder to locate the object, press the shutter release button to take pictures. The image processing time is around 1 second only

#### Video Recording

- Press the Mode button until the **Video Recording** icon is shown.
- Using Viewfinder to locate the object, press and hold the Shutter Release button.
- The camera will take a continuous video until you release the shutter button.

#### PC Camera/Webcam

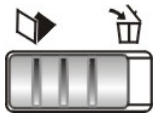
- Connect your camera to your PC. The camera will automatically power on and switch to PC camera mode.
- Run a webcam application such as NetMeeting (available with Windows 98, Me, 2000 and included in this package).
- Adjust the focus ring to get a clear image.

## Deleting Pictures

### Delete The Last Picture Taken

Press the **Backward** "▼/☒" button to delete the last picture taken. The delete indicator "☒" will appear on the status LCD.

### Delete All Pictures



Move the **Trashcan** switch to the right. All pictures in memory will be deleted and all settings will be changed to the default setting. Move the switch to the left and press the **Power** button for 3 seconds to restart the camera.

**Note:** Be careful when deleting pictures so that you don't accidentally delete a photo that you want to save.

## Transferring Images To Your Computer

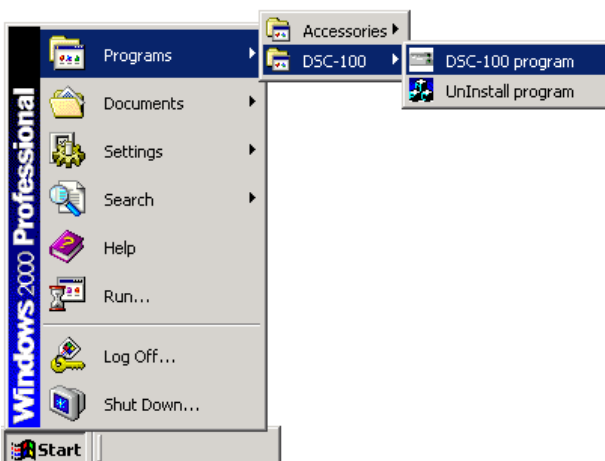
The fastest and easiest way to download pictures from the DSC-100 to your computer is to use the DSC-100 Software installed in the start menu. You can also use the software that was bundled with the DSC-100 using the TWAIN interface. TWAIN is an industry standard interface for scanners and digital cameras. The TWAIN Interface works in combination with any TWAIN compliant image processing application, such as MGI PhotoSuite III SE. The image processing application is often referred to as the host application.

### Using The DSC-100 Program To Save Your Images

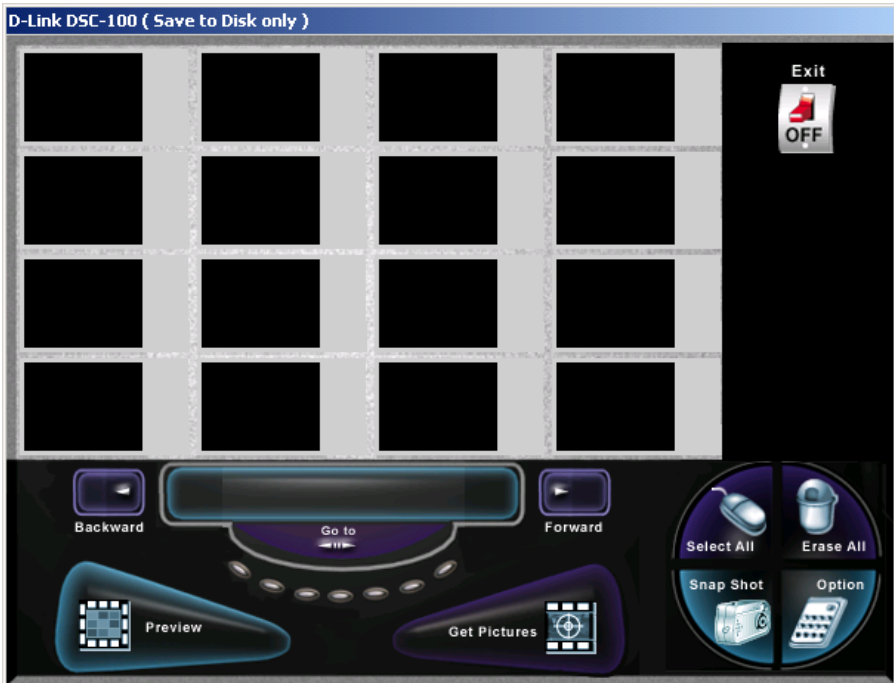
The following illustration provides an overview of the TWAIN interface to download photographs from the DSC-100 to your computer.

This example uses the DSC-100 download program. Instructions for using a different application are discussed further on in the manual.

Click on **Start > Programs > DSC-100 > DSC-100 Program**.



The following screen will be shown.

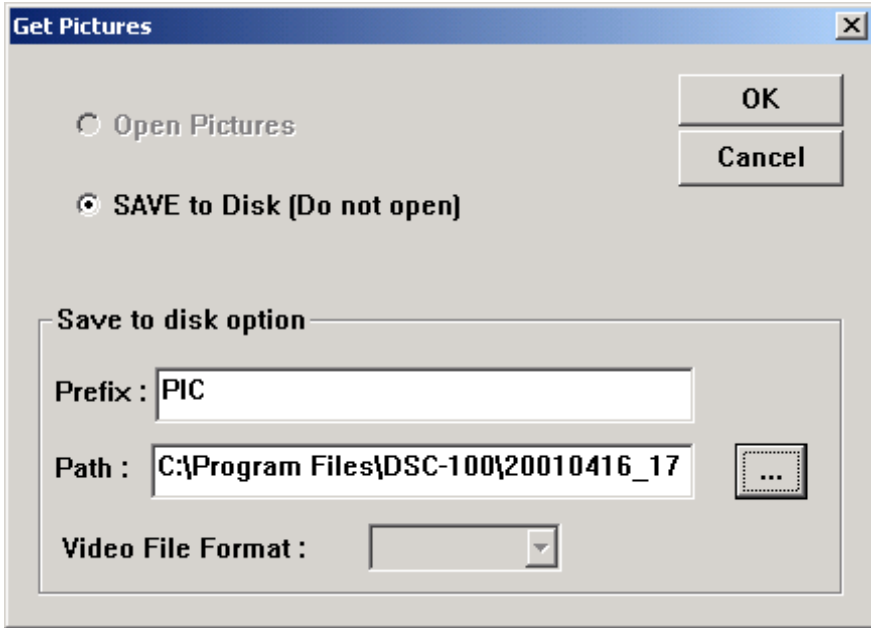


This screen allows you to preview and select which images you would like to save as a file.

If the thumbnails do not appear, please check your USB connection and push the **Preview** button to try again.

Select the image(s) that you want to save and click the **Get Pictures** button. You may press the **Select All** button to select all of the images on the DSC-100.

The following screen will appear.



You can select a directory to save the pictures to by clicking the browse "..." button.

The **Prefix** box allows you to select a prefix, which will be the first part of the pictures' file name. For example, if you select pictures 005, 006 and 009 to save to disk, and the prefix is "Pic", the pictures' file names will be Pic005.jpg, Pic006.jpg and Pic009.jpg.

**Warning:** If you choose a filename and the selected folder already contains a file by that name, the new file will overwrite the old file automatically. If you use the default **Path** shown in the Path box, you will not have a problem with this.

If you are downloading a Digital Video, you can select AVI or Mpeg1 as the video format that the video file will be encoded in. If you choose AVI(Audio Video Interlaced file developed by Microsoft), the file will have a suffix of .AVI. If you choose Mpeg1(short for the Moving Pictures Expert Group MPEG version 1), the file will have a suffix of .MPG. AVI files are larger in file size but have shorter image processing time. Mpeg1 files have are smaller in file size but have longer image processing time. Most video applications support both formats.

You can erase all the images in the DSC-100's memory by pressing the **Erase All** button

**Warning:** The images stored in the camera will be erased when you click the **Erase All** button. Make sure you want to delete all the photos before clicking the **Erase All** button.

Pressing the **Snapshot** button will take a picture of whatever is currently seen through the viewfinder.

Pressing the **Options** button will show the current software and firmware versions. If you contact D-Link Technical Support for any reason, please have this information available.



## Using a TWAIN Compliant Imaging Application To Download Images from the DSC-100

Listed below are the steps for using the DSC-100 TWAIN interface with the MGI PhotoSuite III SE (which may be bundled with this camera).

**Note:** These instructions are not intended as a rule for all imaging software. Consult the applicable users manual for instructions when using other imaging applications.

Follow these steps to download images from the DSC-100.

- Execute MGI PhotoSuite III SE.
  - Click on **Digital Camera (TWAIN)**
  - Select **DSC-100 TAWAIN** as the source
  - Click the **Download** button
- Select **Open Pictures** if you want to view the full-size picture before saving it to disk.
- Select **Save to Disk (Do not open)** if you want to save the images directly to disk without previewing the images. If this option is selected, you will be able to select a prefix and path name. Otherwise, these two options are not needed.
- Click the **OK** button
- After you press the **OK** button, the full size picture will be retrieved and the thumbnail window will be closed.

## FAQ (Frequently Asked Questions)

**Q. I connected the DSC-100 to my USB port before running the Setup program. What do I do now?**

A. If you connect the DSC-100 to the computer before installing the driver the first time, the Windows operating software may use incorrect information and may not allow you to install the correct driver. To fix this problem, follow these steps.

- Stop and exit all other running programs before you proceed.
- Cancel the “Add New Hardware” wizard.
- Disconnect the DSC-100 from the USB port.
- Restart your computer.
- If you are using the Windows 2000 operating system, use Administrator rights when installing any devices.
- Follow the Quick Install Guide to install the DSC-100.

**Q. How do I Uninstall the DSC-100 from my computer?**

A. If you need to uninstall the driver, disconnect the DSC-100 and click **Start > Programs > DSC-100 > Uninstall program**. Click "Yes" to execute the uninstall. You can then shut down your computer and disconnect the DSC-100 from the USB port.

# Technical Specifications

## Standards:

- USB Specification version 1.1 (Compatible with USB 2.0)

## Connector

- One upstream (USB Type A)

## Sensor

- CMOS Image Sensor with 100K Pixel (352x288) Default Resolution
- Auto Exposure

## Performance

- 30fps Video Frame Rate

## Dimension

- 20.6mm x 25.5mm x 46mm (L x W x H)

## Features

- Digital Still Image Capture
- Webcam/PC Camera
- Digital Video Recorder
- USB Interface
- Holds up to 100 images or 45 seconds of video
- Easy to use download interface
- High quality 100K Pixel CMOS image sensor
- Very small/pocket size camera
- Free bundled software for photo/video editing and video conferencing.

# D-Link Offices

<b>AUSTRALIA</b>	<b>D-LINK AUSTRALASIA</b> Unit 16, 390 Eastern Valley Way, Roseville, NSW 2069, Australia TEL: 61-2-9417-7100 FAX: 61-2-9417-1077 TOLL FREE: 1800-177-100 (Australia), 0800-900900 (New Zealand) URL: www.dlink.com.au E-MAIL: support@dlink.com.au, info@dlink.com.au
<b>CANADA</b>	<b>D-LINK CANADA</b> 2180 Winston Park Drive, Oakville, Ontario L6H 5W1 Canada TEL: 1-905-829-5033 FAX: 1-905-829-5095 BBS: 1-965-279-8732 FREE CALL: 1-800-354-6522 URL: www.dlink.ca E-MAIL: techsup@dlink.ca
<b>CHILE</b>	<b>D-LINK SOUTH AMERICA</b> Isidora Goyenechea #2934 of 702, Las Condes, Santiago, Chile TEL: 56-2-232-3185 FAX: 56-2-2320923 URL: www.dlink.cl
<b>CHINA</b>	<b>D-LINK CHINA</b> 2F., Sigma Building, 49 Zhichun Road, Haidian District, 100080 Beijing, China TEL: 86-10-88097777 FAX: 86-10-88096789 URL: www.dlink.com.cn
<b>DENMARK</b>	<b>D-LINK DENMARK</b> Naverland 2, DK-2800 Glostrup, Copenhagen, Denmark TEL: 45-43-989040 FAX: 45-43-424347 URL: www.dlink.dk E-MAIL: info@dlink.dk
<b>EGYPT</b>	<b>D-LINK MIDDLE EAST</b> 7 Assem Ebn Sabet Street, Heliopolis Cairo, Egypt TEL: 202-2456176 FAX: 202-2456192 URL: www.dlink-me.com E-MAIL: support@dlink-me.com
<b>FRANCE</b>	<b>D-LINK FRANCE</b> Le Florilege #2, Allée de la Fresnerie 78330 Fontenay Le Fleury France TEL: 33-1-30238688 FAX: 33-1-3023-8689 URL: www.dlink-france.fr E-MAIL: info@dlink-france.fr
<b>GERMANY</b>	<b>D-LINK GERMANY</b> Bachstrae 22, D-65830 Kriftel Germany TEL: 49-(0)6192-97110 FAX: 49-(0)6192-9711-11 URL: www.dlink.de BBS: 49-(0)6192-971199 (Analog) 49-(0)6192-971198 (ISDN) INFO LINE: 00800-7250-0000 (toll free) HELP LINE: 00800-7250-4000 (toll free) REPAIR LINE: 00800-7250-8000
<b>INDIA</b>	<b>D-LINK INDIA</b> Plot No.5, Kurla-Bandra Complex Road, Off Cst Road, Santacruz (E), Bombay - 400 098 India TEL: 91-22-652-6696 FAX: 91-22-652-8914 URL: www.dlink-india.com E-MAIL: service@dlink.india.com
<b>ITALY</b>	<b>D-LINK ITALIA</b> Via Nino Bonnet No. 6/b, 20154 Milano, Italy TEL: 39-02-2900-0676 FAX: 39-02-2900-1723 URL: www.dlink.it E-MAIL: info@dlink.it
<b>JAPAN</b>	<b>D-LINK JAPAN</b> 10F, 8-8-15 Nishi-Cotanda, Shinagawa-ku, Tokyo 141 Japan TEL: 81-3-5434-9678 FAX: 81-3-5434-9868 URL: www.d-link.co.jp
<b>RUSSIA</b>	<b>D-LINK RUSSIA</b> Michurinski Prospekt 49, 117607 Moscow, Russia TEL: 7-095-737-3389, 7-095-737-3492 FAX: 7-095-737-3390
<b>SINGAPORE</b>	<b>D-LINK INTERNATIONAL</b> 1 International Business Park, #03-12 The Synergy, Singapore 609917 TEL: 65-774-6233 FAX: 65-774-6322 URL: www.dlink-intl.com E-MAIL: info@dlink.com.sg
<b>S. AFRICA</b>	<b>D-LINK SOUTH AFRICA</b> Unit 2, Parkside 86 Oak Avenue Highveld Technopark Centurion, Gauteng, Republic of South Africa TEL: 27(0)126652165 FAX: 27(0)126652186
<b>SWEDEN</b>	<b>D-LINK SWEDEN</b> P.O. Box 15036, S-167 15 Bromma Sweden TEL: 46-(0)8564-61900 FAX: 46-(0)8564-61901 E-MAIL: info@dlink.se URL: www.dlink.se
<b>TAIWAN</b>	<b>D-LINK TAIWAN</b> 2F, No. 119 Pao-Chung Road, Hsin-Tien, Taipei, Taiwan, R.O.C. TEL: 886-2-2910-2626 FAX: 886-2-2910-1515 URL: www.dlinktw.com.tw
<b>U.K.</b>	<b>D-LINK EUROPE</b> 4 <sup>th</sup> Floor, Merit House, Edgware Road, Colindale, London, NW9 5AB, U.K. TEL: 44-20-8731-5555 FAX: 44-20-8731-5511 URL: www.dlink.co.uk E-MAIL: info@dlink.co.uk
<b>U.S.A.</b>	<b>D-LINK U.S.A.</b> 53 Discovery Drive, Irvine, CA 92618 USA TEL: 1-949-788-0865 FAX: 1-949-753-7033 INFO LINE: 1-800-326-1688 BBS: 1-949-455-1779, 1-949-455-9616 URL: www.dlink.com E-MAIL: tech@dlink.com, support@dlink.com Tech Support Hours: 6 A.M. to 6 P.M. Pacific Standard Time. Monday through Friday

## Limited Warranty

D-Link Systems, Inc. (“D-Link”) provides this limited warranty for its product only to the person or entity who originally purchased the product from D-Link or its authorized reseller or distributor.

**Limited Hardware Warranty:** D-Link warrants that the hardware portion of the D-Link products described below (“Hardware”) will be free from material defects in workmanship and materials from the date of original retail purchase of the Hardware, for the period set forth below applicable to the product type (“Warranty Period”) if the Hardware is used and serviced in accordance with applicable documentation; provided that a completed Registration Card is returned to an Authorized D-Link Service Office within ninety (90) days after the date of original retail purchase of the Hardware. If a completed Registration Card is not received by an authorized D-Link Service Office within such ninety (90) day period, then the Warranty Period shall be ninety (90) days from the date of purchase.

<b>Product Type</b>	<b>Warranty Period</b>
Product (excluding power supplies and fans), if purchased and delivered in the fifty (50) United States, or the District of Columbia (“USA”)	One (1) Year
Product purchased or delivered outside the USA	One (1) Year
Power Supplies and Fans	One (1) Year
Spare parts and spare kits	Ninety (90) days

D-Link’s sole obligation shall be to repair or replace the defective Hardware at no charge to the original owner. Such repair or replacement will be rendered by D-Link at an Authorized D-Link Service Office. The replacement Hardware need not be new or of an identical make, model or part; D-Link may in its discretion may replace the defective Hardware (or any part thereof) with any reconditioned product that D-Link reasonably determines is substantially equivalent (or superior) in all material respects to the defective Hardware. The Warranty Period shall extend for an additional ninety (90) days after any repaired or

replaced Hardware is delivered. If a material defect is incapable of correction, or if D-Link determines in its sole discretion that it is not practical to repair or replace the defective Hardware, the price paid by the original purchaser for the defective Hardware will be refunded by D-Link upon return to D-Link of the defective Hardware. All Hardware (or part thereof) that is replaced by D-Link, or for which the purchase price is refunded, shall become the property of D-Link upon replacement or refund.

***Limited Software Warranty:*** D-Link warrants that the software portion of the product (“Software”) will substantially conform to D-Link’s then current functional specifications for the Software, as set forth in the applicable documentation, from the date of original delivery of the Software for a period of ninety (90) days (“Warranty Period”), if the Software is properly installed on approved hardware and operated as contemplated in its documentation. D-Link further warrants that, during the Warranty Period, the magnetic media on which D-Link delivers the Software will be free of physical defects. D-Link’s sole obligation shall be to replace the non-conforming Software (or defective media) with software that substantially conforms to D-Link’s functional specifications for the Software. Except as otherwise agreed by D-Link in writing, the replacement Software is provided only to the original licensee, and is subject to the terms and conditions of the license granted by D-Link for the Software. The Warranty Period shall extend for an additional ninety (90) days after any replacement Software is delivered. If a material non-conformance is incapable of correction, or if D-Link determines in its sole discretion that it is not practical to replace the non-conforming Software, the price paid by the original licensee for the non-conforming Software will be refunded by D-Link; provided that the non-conforming Software (and all copies thereof) is first returned to D-Link. The license granted respecting any Software for which a refund is given automatically terminates.

***What You Must Do For Warranty Service:***

**Registration Card.** The Registration Card provided at the back of this manual must be completed and returned to an Authorized D-Link Service Office for each D-Link product within ninety (90) days after the product is purchased and/or licensed. The addresses/telephone/fax list of the nearest Authorized D-Link Service Office is provided in the back of this manual. FAILURE TO PROPERLY COMPLETE AND TIMELY RETURN THE REGISTRATION CARD MAY AFFECT THE WARRANTY FOR THIS PRODUCT.

**Submitting A Claim.** Any claim under this limited warranty must be submitted in writing before the end of the Warranty Period to an Authorized D-Link Service Office. The claim must include a written description of the Hardware defect or Software nonconformance in sufficient detail to allow D-Link to confirm the same. The original product owner must obtain a Return Material Authorization (RMA) number from the Authorized D-Link Service Office and, if requested, provide written proof of purchase of the product (such as a copy of the dated purchase invoice for the product) before the warranty service is provided. After an RMA number is issued, the defective product must be packaged securely in the original or other suitable shipping package to ensure that it will not be damaged in transit, and the RMA number must be prominently marked on the outside of the package. The packaged product shall be insured and shipped to D-Link, 53 Discovery Drive, Irvine CA 92618, with all shipping costs prepaid. D-Link may reject or return any product that is not packaged and shipped in strict compliance with the foregoing requirements, or for which an RMA number is not visible from the outside of the package. The product owner agrees to pay D-Link's reasonable handling and return shipping charges for any product that is not packaged and shipped in accordance with the foregoing requirements, or that is determined by D-Link not to be defective or non-conforming.

***What Is Not Covered:***

This limited warranty provided by D-Link does not cover:

Products that have been subjected to abuse, accident, alteration, modification, tampering, negligence, misuse, faulty installation, lack of reasonable care, repair or service in any way that is not contemplated in the documentation for the product, or if the model or serial number has been altered, tampered with, defaced or removed;

Initial installation, installation and removal of the product for repair, and shipping costs;

Operational adjustments covered in the operating manual for the product, and normal maintenance;

Damage that occurs in shipment, due to act of God, failures due to power surge, and cosmetic damage; and

Any hardware, software, firmware or other products or services provided by anyone other than D-Link.

***Disclaimer of Other Warranties:*** EXCEPT FOR THE LIMITED WARRANTY SPECIFIED HEREIN, THE PRODUCT IS PROVIDED “AS-IS” WITHOUT ANY WARRANTY OF ANY KIND INCLUDING, WITHOUT LIMITATION, ANY WARRANTY OF MERCHANTABILITY, FITNESS FOR A PARTICULAR PURPOSE AND NON-INFRINGEMENT. IF ANY IMPLIED WARRANTY CANNOT BE DISCLAIMED IN ANY TERRITORY WHERE A PRODUCT IS SOLD, THE DURATION OF SUCH IMPLIED WARRANTY SHALL BE LIMITED TO NINETY (90) DAYS. EXCEPT AS EXPRESSLY COVERED UNDER THE LIMITED WARRANTY PROVIDED HEREIN, THE ENTIRE RISK AS TO THE QUALITY, SELECTION AND PERFORMANCE OF THE PRODUCT IS WITH THE PURCHASER OF THE PRODUCT.

***Limitation of Liability:*** TO THE MAXIMUM EXTENT PERMITTED BY LAW, D-LINK IS NOT LIABLE UNDER ANY CONTRACT, NEGLIGENCE, STRICT LIABILITY OR OTHER LEGAL OR EQUITABLE THEORY FOR ANY LOSS OF USE OF THE PRODUCT,



INCONVENIENCE OR DAMAGES OF ANY CHARACTER, WHETHER DIRECT, SPECIAL, INCIDENTAL OR CONSEQUENTIAL (INCLUDING, BUT NOT LIMITED TO, DAMAGES FOR LOSS OF GOODWILL, WORK STOPPAGE, COMPUTER FAILURE OR MALFUNCTION, LOSS OF INFORMATION OR DATA CONTAINED IN, STORED ON, OR INTEGRATED WITH ANY PRODUCT RETURNED TO D-LINK FOR WARRANTY SERVICE) RESULTING FROM THE USE OF THE PRODUCT, RELATING TO WARRANTY SERVICE, OR ARISING OUT OF ANY BREACH OF THIS LIMITED WARRANTY, EVEN IF D-LINK HAS BEEN ADVISED OF THE POSSIBILITY OF SUCH DAMAGES. THE SOLE REMEDY FOR A BREACH OF THE FOREGOING LIMITED WARRANTY IS REPAIR, REPLACEMENT OR REFUND OF THE DEFECTIVE OR NON-CONFORMING PRODUCT.

**GOVERNING LAW:** This Limited Warranty shall be governed by the laws of the state of California.

Some states do not allow exclusion or limitation of incidental or consequential damages, or limitations on how long an implied warranty lasts, so the foregoing limitations and exclusions may not apply. This limited warranty provides specific legal rights and the product owner may also have other rights which vary from state to state.

### **Trademarks**

Copyright ©2001 D-Link Corporation. Contents subject to change without prior notice. D-Link is a registered trademark of D-Link Corporation/D-Link Systems, Inc. All other trademarks belong to their respective proprietors.

### **Copyright Statement**

No part of this publication may be reproduced in any form or by any means or used to make any derivative such as translation, transformation, or adaptation without permission from D-Link

Corporation/D-Link Systems Inc., as stipulated by the United States Copyright Act of 1976.

### **CE Mark Warning**

This is a Class B product. In a domestic environment, this product may cause radio interference, in which case the user may be required to take adequate measures

### **Warnung!**

Dies ist in Produkt der Klasse B. Im Wohnbereich kann dieses Produkt Funkstoerungen verursachen. In diesem Fall kann vom Benutzer verlangt werden, angemessene Massnahmen zu ergreifen.

### **Advertencia de Marca de la CE**

Este es un producto de Clase B. En un entorno doméstico, puede causar interferencias de radio, en cuyo case, puede requerirse al usuario para que adopte las medidas adecuadas.

### **Attention!**

Ceci est un produit de classe B. Dans un environnement domestique, ce produit pourrait causer des interférences radio, auquel cas l'utilisateur devrait prendre les mesures adéquates.

### **Attenzione!**

Il presente prodotto appartiene alla classe B. Se utilizzato in ambiente domestico il prodotto può causare interferenze radio, nel cui caso è possibile che l'utente debba assumere provvedimenti adeguati.

### **VCCI Warning**

この装置は、情報処理装置等電波障害自主規制協議会（VCCI）の基準に基づくクラスB情報技術装置です。この装置は、家庭環境で使用することを目的としていますが、この装置がラジオやテレビジョン受信機に近接して使用されると、受信障害を引き起こすことがあります。取扱説明書に従って正しい取り扱いをして下さい。

# Register by mail or online at <http://www.dlink.com/sales/reg/>

## Registration Card

**Print, type or use block letters.**

Your name: Mr./Ms \_\_\_\_\_

Organization: \_\_\_\_\_ Dept. \_\_\_\_\_

Your title at organization: \_\_\_\_\_

Telephone: \_\_\_\_\_ Fax: \_\_\_\_\_

Organization's full address: \_\_\_\_\_

\_\_\_\_\_

Country: \_\_\_\_\_

Date of purchase (Month/Day/Year): \_\_\_\_\_

Product Model	Product Serial No.	* Product installed in type of computer (e.g., Compaq 486)	* Product installed in computer serial No.

(\* Applies to adapters only)

Product was purchased from:

Reseller's name: \_\_\_\_\_

Telephone: \_\_\_\_\_ Fax: \_\_\_\_\_

Reseller's full address: \_\_\_\_\_

\_\_\_\_\_

**Answers to the following questions help us to support your product:**

**1. Where and how will the product primarily be used?**

Home Office Travel Company Business Home Business Personal Use

**2. How many employees work at installation site?**

1 employee 2-9 10-49 50-99 100-499 500-999 1000 or more

**3. What network protocol(s) does your organization use?**

XNS/IPX TCP/IP DECnet Others \_\_\_\_\_

**4. What network operating system(s) does your organization use?**

D-Link LANsmart Novell NetWare NetWare Lite SCO Unix/Xenix PC NFS 3Com 3+Open

Banyan Vines DECnet Pathwork Windows NT Windows NTAS Windows '95

Others \_\_\_\_\_

**5. What network management program does your organization use?**

D-View HP OpenView/Windows HP OpenView/Unix SunNet Manager Novell NMS

NetView 6000 Others \_\_\_\_\_

**6. What network medium/media does your organization use ?**

Fiber-optics Thick coax Ethernet Thin coax Ethernet 10BASE-T UTP/STP

100BASE-TX 100BASE-T4 100VGAnyLAN Others \_\_\_\_\_

**7. What applications are used on your network?**

Desktop publishing Spreadsheet Word processing CAD/CAM

Database management Accounting Others \_\_\_\_\_

**8. What category best describes your company?**

Aerospace Engineering Education Finance Hospital Legal Insurance/Real Estate Manufacturing

Retail/Chainstore/Wholesale Government Transportation/Utilities/Communication VAR

System house/company Other \_\_\_\_\_

**9. Would you recommend your D-Link product to a friend?**

Yes No Don't know yet

**10. Your comments regarding this product?**

\_\_\_\_\_

\_\_\_\_\_

PLEASE  
PLACE STAMP  
HERE

**TO:** \_\_\_\_\_  
\_\_\_\_\_  
\_\_\_\_\_

**D-Link®**